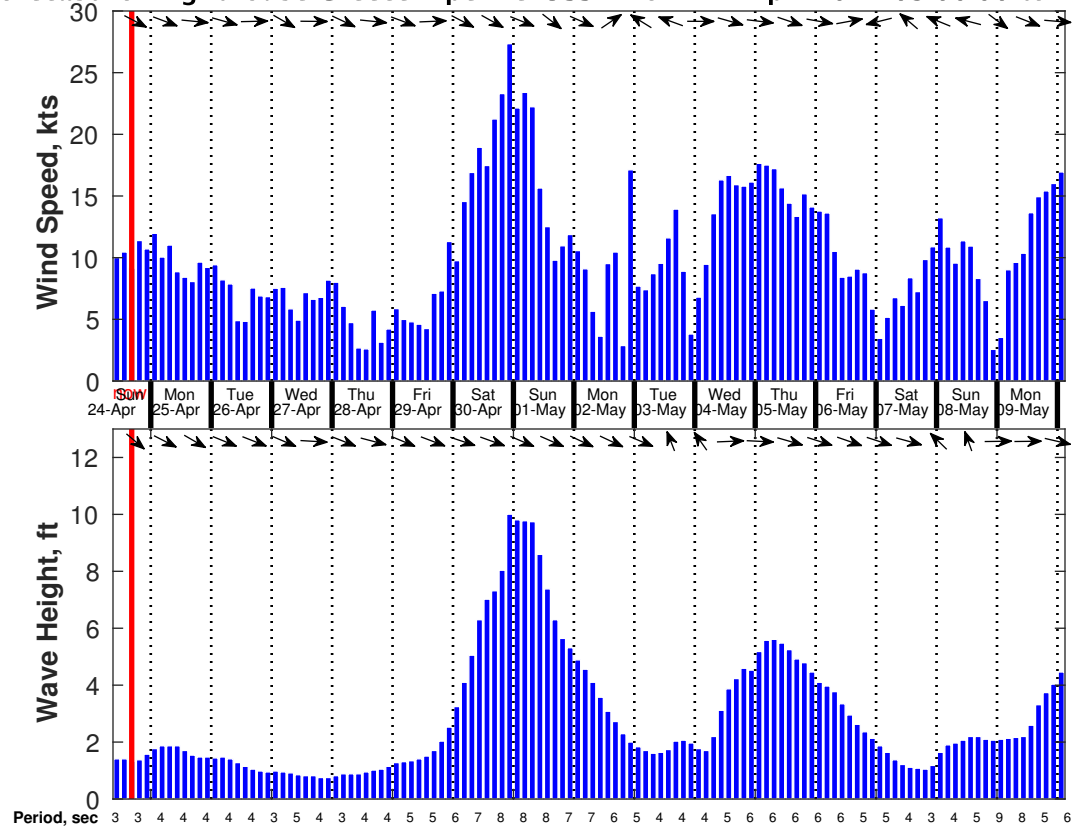
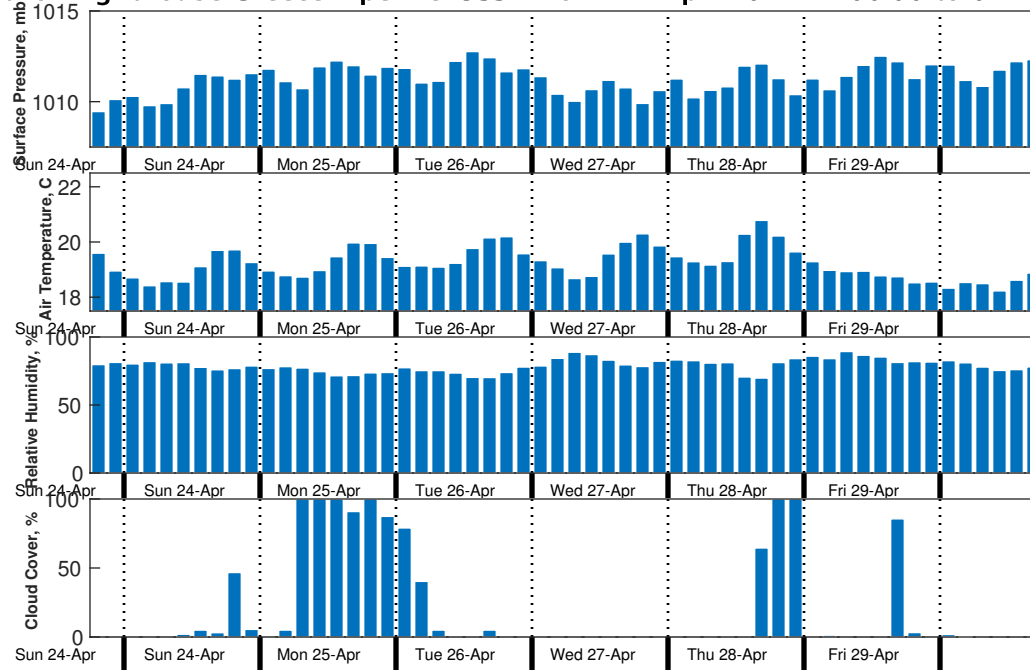

Marine Weather Forecast for Lighthouse Greece Pipeline-OSS2

Temporarily unavailable. Check back later.

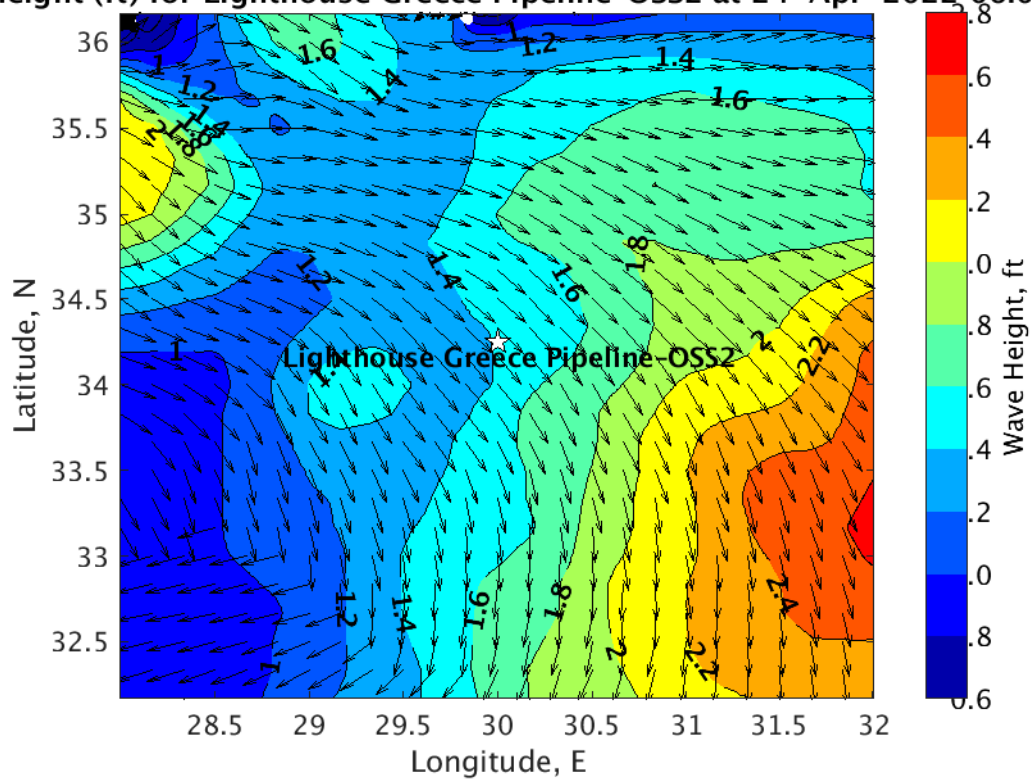
Wind & Wave Forecast for Lighthouse Greece Pipeline-OSS2 from 24-Apr-2022 09:00:00 to 10-May-2022 06:00:00



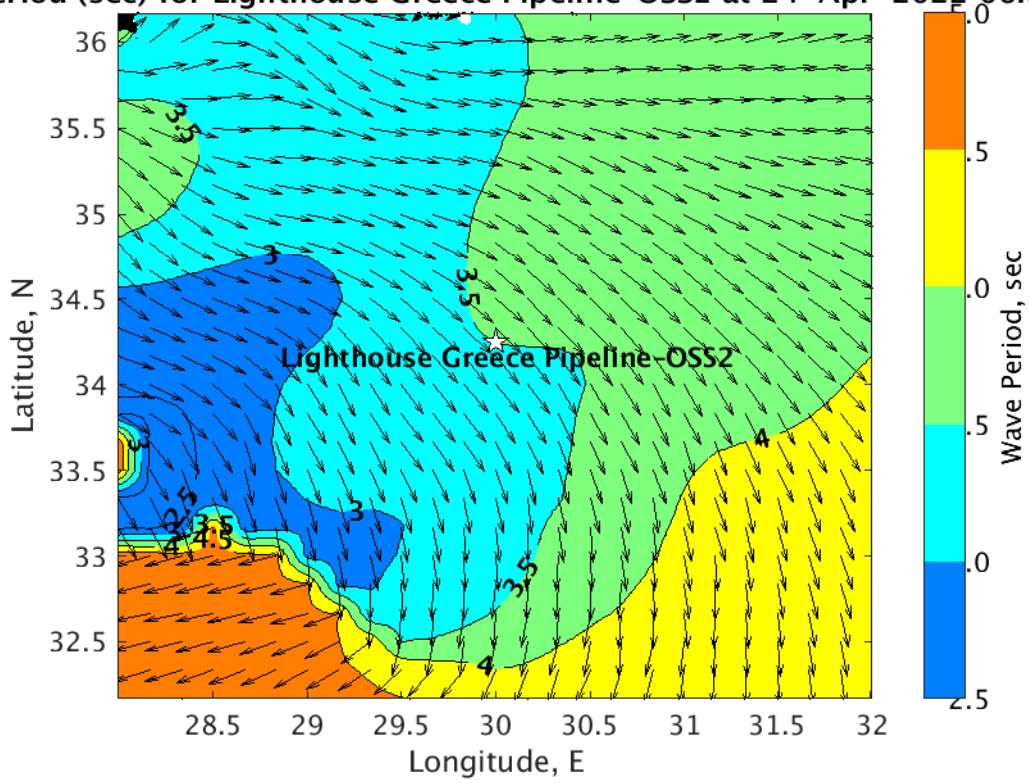
Met Forecast for Lighthouse Greece Pipeline-OSS2 from 24-Apr-2022 12:00:00 to 01-May-2022 12:00:00



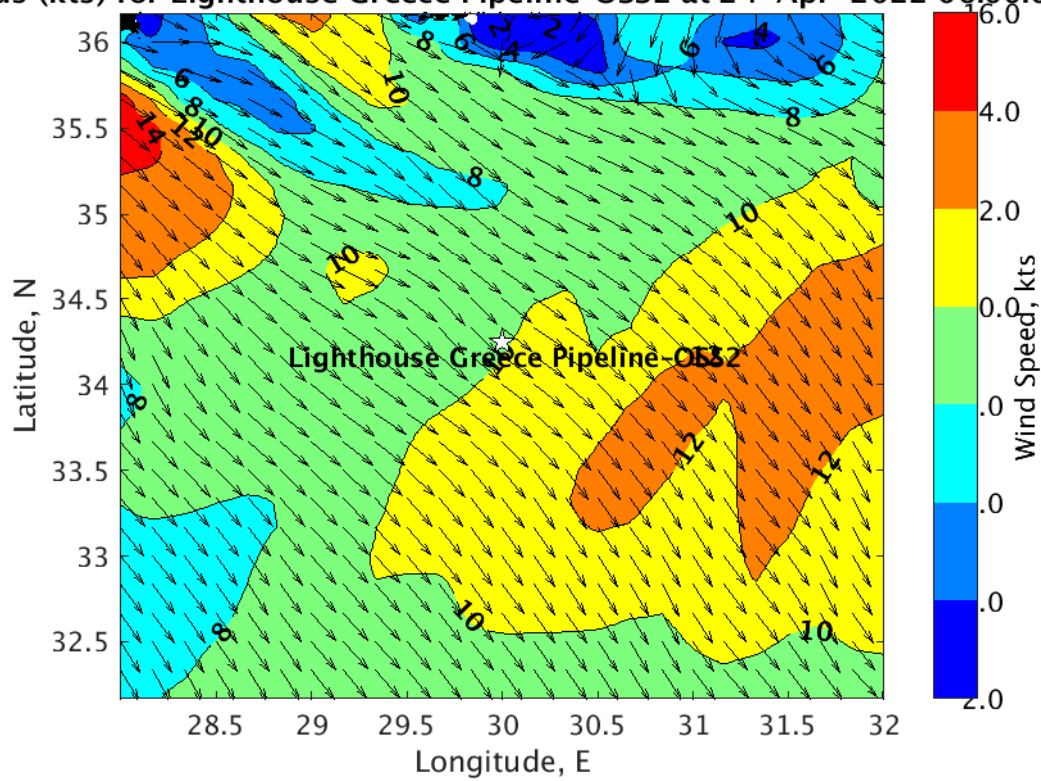
height (ft) for Lighthouse Greece Pipeline-OSS2 at 24-Apr-2022 06:00:00



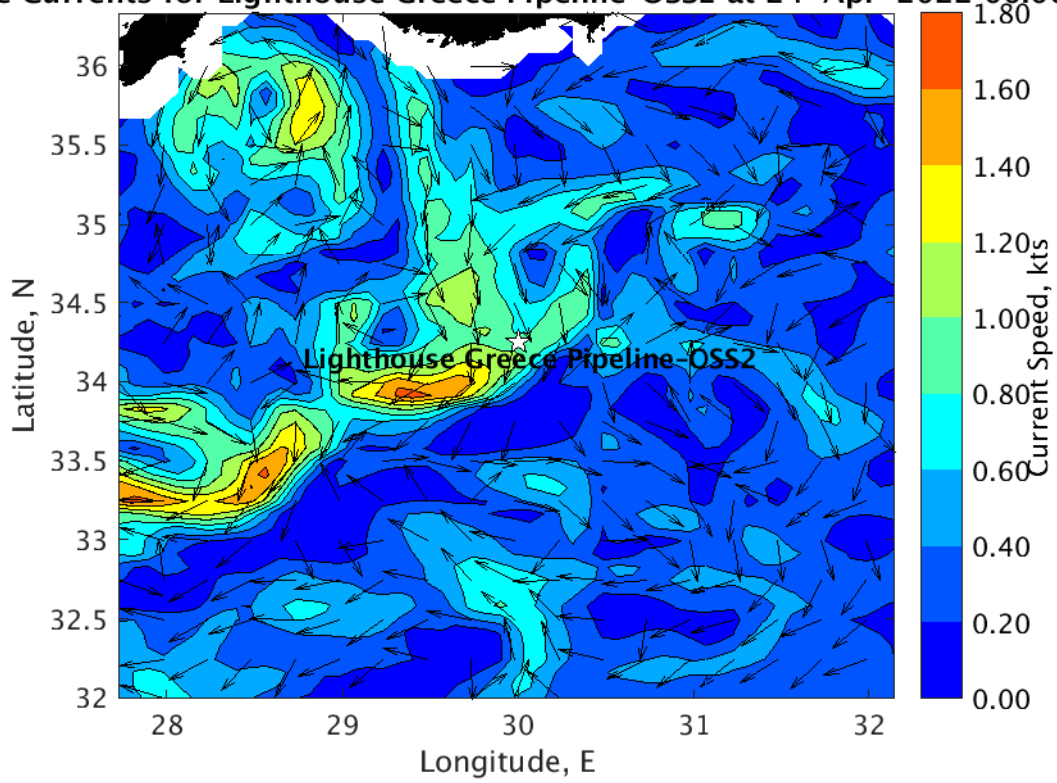
Wave Period (sec) for Lighthouse Greece Pipeline-OSS2 at 24-Apr-2022 06:00:00



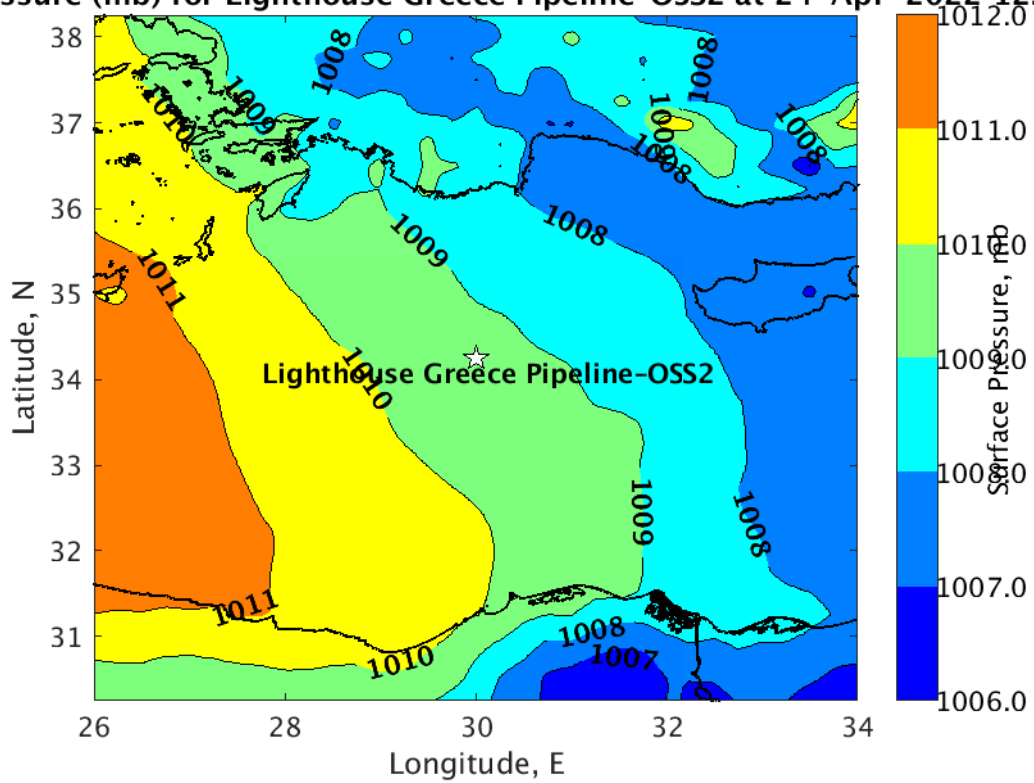
ds (kts) for Lighthouse Greece Pipeline-OSS2 at 24-Apr-2022 06:00:00



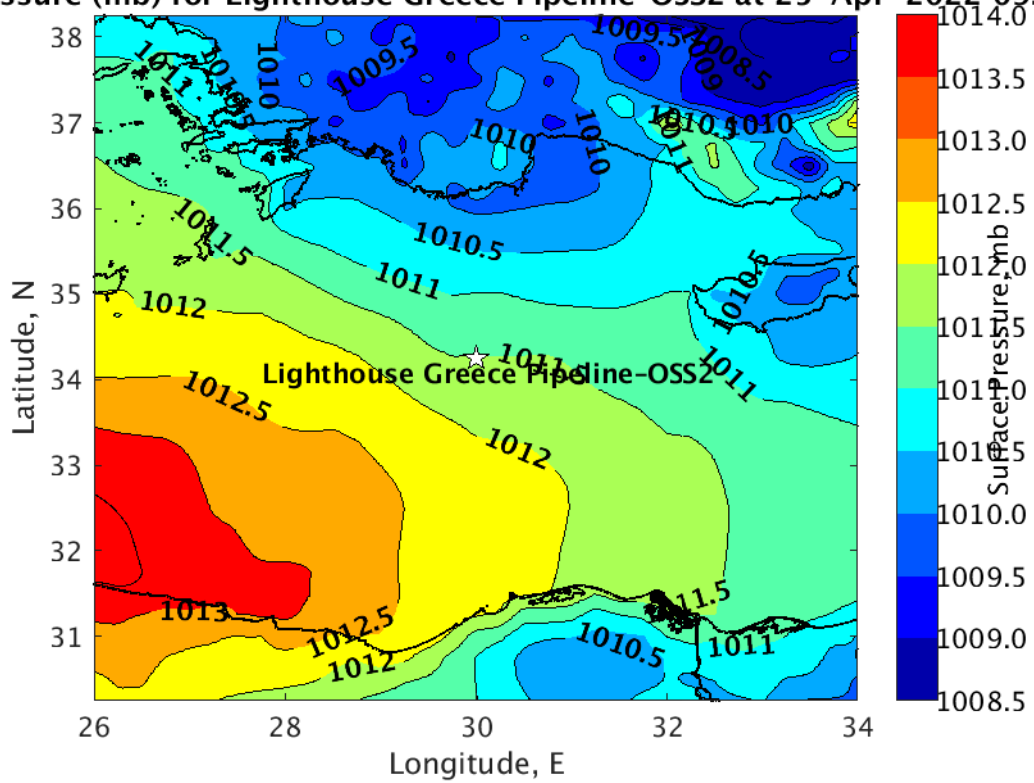
Currents for Lighthouse Greece Pipeline-OSS2 at 24-Apr-2022 00:00:00



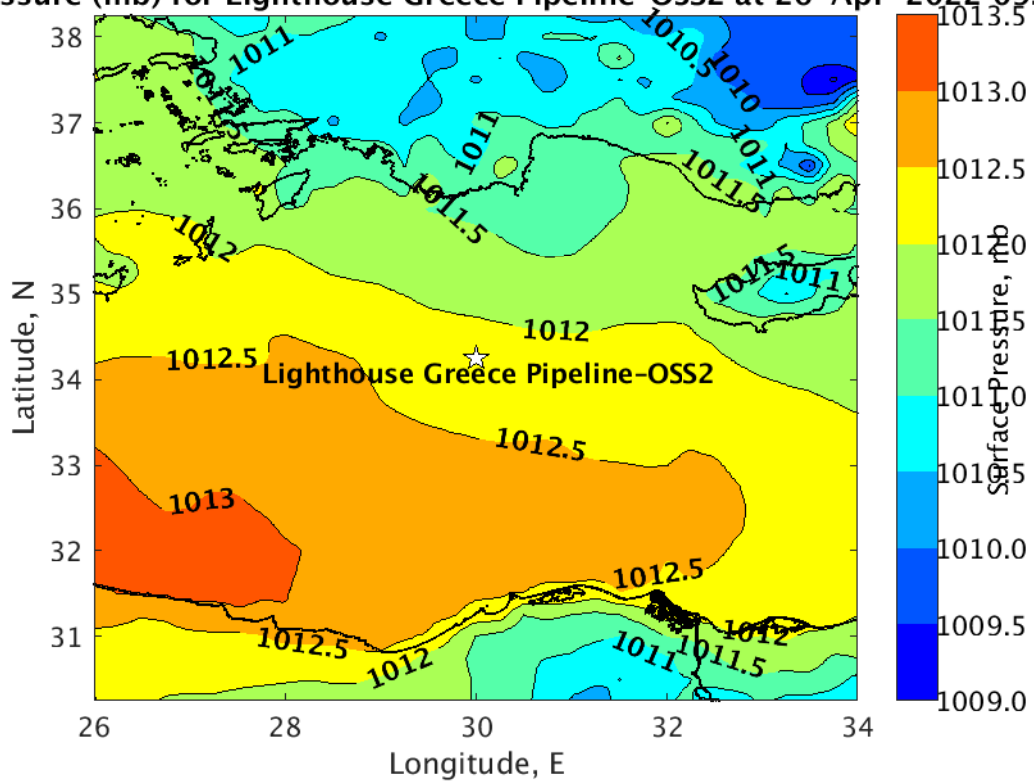
Pressure (mb) for Lighthouse Greece Pipeline-OSS2 at 24-Apr-2022 12:00:



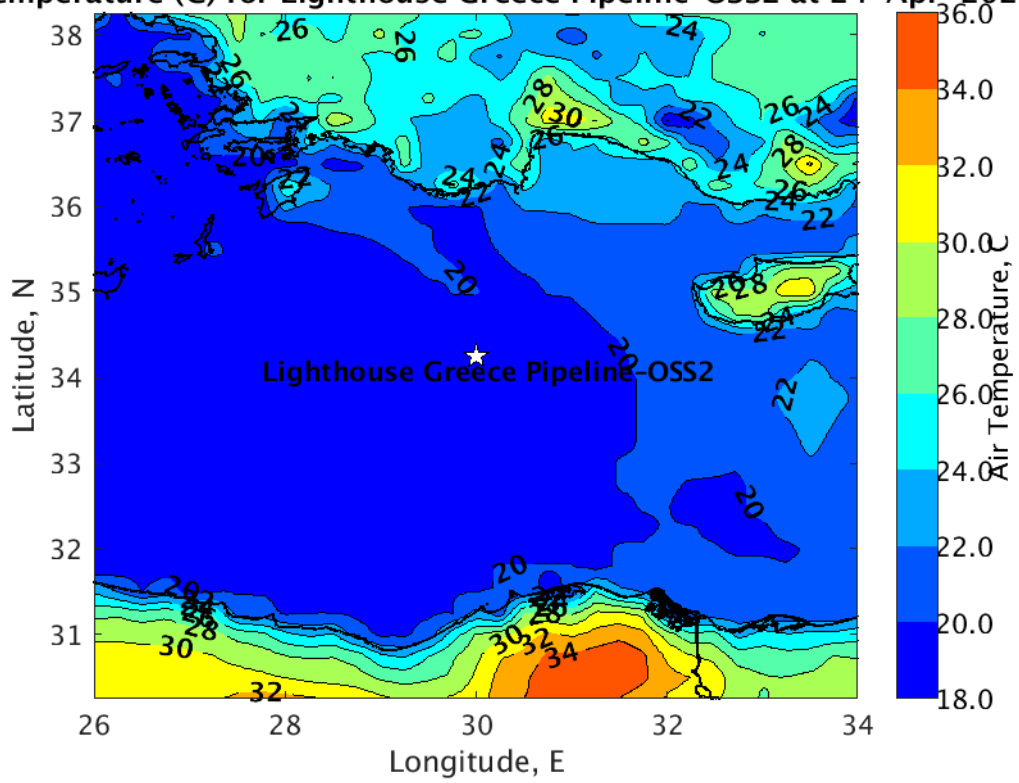
Pressure (mb) for Lighthouse Greece Pipeline-OSS2 at 25-Apr-2022 09:00:



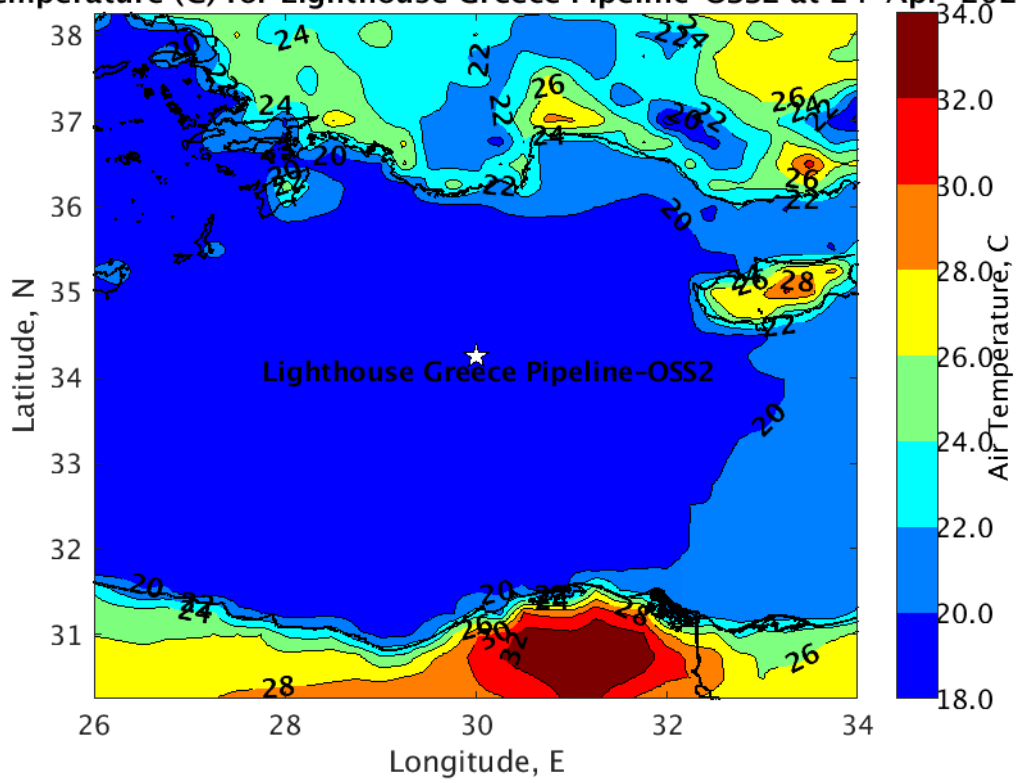
Pressure (mb) for Lighthouse Greece Pipeline-OSS2 at 26-Apr-2022 09:00:



Temperature (C) for Lighthouse Greece Pipeline-OSS2 at 24-Apr-2022



Temperature (C) for Lighthouse Greece Pipeline-OSS2 at 24-Apr-2022



Temperature (C) for Lighthouse Greece Pipeline-OSS2 at 24-Apr-2022

